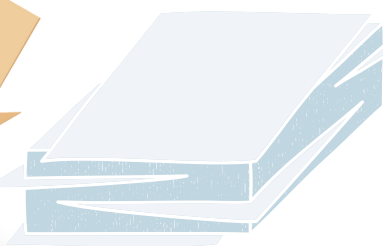
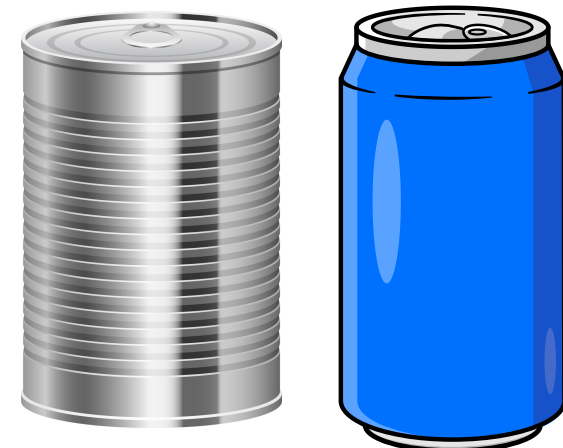


recycling



cardboard
paper

tins
cans



plastic bottle
milk pint jug
plastic tubs

Where does it go?

Material reclamation facilities.

It is then sorted into material types and sent to specialised facilities.

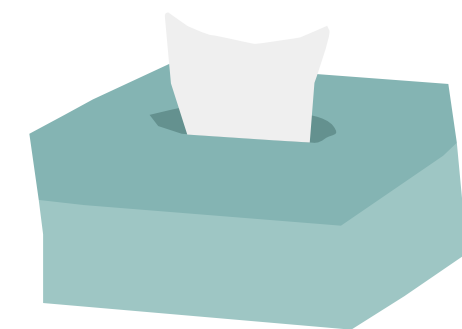
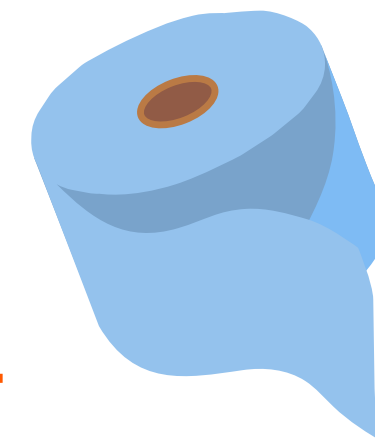
E.g. Plastic is sent to plastic processing plants to be remelted into other plastic.

rubbish



takeaway
containers
styrofoam

tissue paper
blue roll



crisp packets
food wrappers

Where does it go?

Energy from waste facilities.

Waste is turned into a useable form of energy. This can include electricity, heat and transport fuels.

